



The Networking Platform for the World's Top Project Cargo Specialists

JSL Qatar & WSS UAE Handle Shipment of Construction Vehicles

13th September 2021

JSL Global Qatar and **Wilhelmsen Ships Service (WSS) UAE** have handled a shipment of construction vehicles consisting of **11 RORO units** at a total of **1,175cbm / 262mt**.

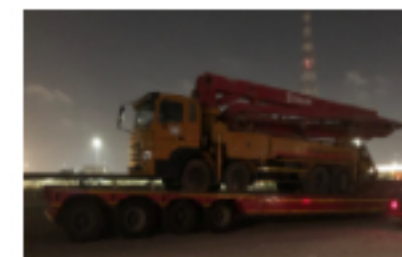
JSL Qatar were in charge for the complete movement from the origin's door to the port of discharge including transport, port handling, export customs, sea freight from port to port and liaising with the client. Wilhelmsen UAE supported JSL with sourcing the right sea freight for the movement. The vehicles ready for loading are photographed in the gallery below.


The collaboration between JSL Qatar and WSS UAE ensured proper coordination between all parties and the timely movement of the shipment.

If you are looking for any solutions to ship specialised cargo, via breakbulk or RORO, in Qatar and the UAE, please contact projects@jsl-global.net and oceandesk@wilhelmsen.com.

<http://www.jsl-global.net>

<http://www.wilhelmsen.com>




 Next Meeting



2021 Annual Summit in Croatia


[Find out more](#)

 Obtain a Quote



Free quotation and advice


[Find out more](#)

 Newsletter



Feel free to subscribe to our newsletter

[Find out more](#)

 Help & Support



Our team provide pro-active management

[Find out more](#)