



JSL Global- Distribution

Efficient and hassle free road transportation delivers within city for planned and on demand pick-ups and delivery solutions

Trucking & distribution



- ↔ Dedicated Fleet of Refrigerated Vehicles
- ↔ Part cargo consolidation & movement
- ↔ Vehicles with partition facility to manage different temperature – Freez-
- ↔ Point-to-point service
- ↔ Chilled, frozen and ambient movement
- ↔ Plug-in support available in all 3T+ vehicles

Vehicles Types :: 1ton/3ton/7ton

Cargo trucks :: General open and close body cargo trucks

Chilled trucks :: special chiller/chilled trucks

Freezer trucks :: Industry cold freezer and refrigerated vehicles



Industry/Product

- Ice Cream
- Dairy products including butter and cheese
- Beverages
- Ready-to-eat / ready-to-cook food products
- Poultry and meat
- Fruits and vegetables
- Sea food
- Confectioneries including chocolate and baked products

JSL 4T Single Cabin Dry Box – Vehicle Details

G.V.M.	6500kg
Dimensions (M)	Internal: 4.9 x 2.0 x 2.0 (L x W x H) External: 5.0 x 2.1 x 2.1 (L x W x H)
CHASSIS LENGTH	4945MM

Contact-Us ::

distribution@jsl-global.net

Tel :: +974-44850653

Fax :: +974-44131529



4T Chiller Truck



JSL 4T Chiller Truck – Vehicle Details

Dimensions	<ul style="list-style-type: none"> • External: 5.0 x 2.2 x 2.2 m (L x W x H) • Internal: 4.8 x 2.0 x 2.0m (L x W x H) • Cargo Compartment Volume: 19.2 Cubic Meter -18 to +30 Deg C (Freezer cum Chiller)
Wall/Ceiling	<ul style="list-style-type: none"> • 100mm thick Thermo • External skins 0.6mm pre-painted hot dip galvanized
Floor	<ul style="list-style-type: none"> • Overall thickness 100mm • 18mm thick reinforced ply skins on top and bottom • Polyurethane foam core reinforced with wooden • Final finish with 3mm GRP sand finished floor • 300mm high aluminium kick plates

Contact Us ::
distribution@jsl-global.net
 TEL :: +974-44850653
 Fax :: +974-44131529

Freezer & Chiller with partition



JSL 4T Freezer & Chiller Truck – Vehicle Details

Movable Partition

- Movable and Tilttable partition with 12V thermostatic operated fan and Louvers.
- Movable partition can be locked at any required position between side door and rear door with the help of Embedded Cargo Track & Locking Facility provided.

Internal Dimentions (M) (L x W x H)

4.4 x 2.1 x 2.1

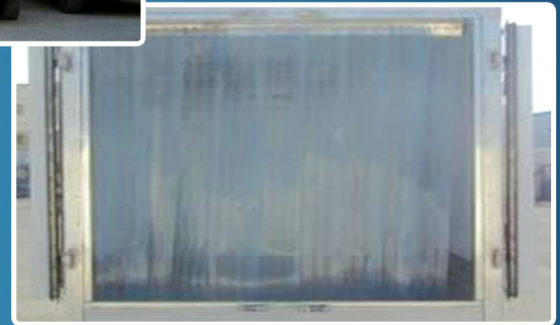
Contact Us ::

distribution@jssl-global.net

TEL :: +974-44850653

Fax :: +974-44131529

One Ton Chiller



JSL 1T Chiller Truck – Vehicle Details

Internal Dimensions (m) (L x W x H) 2.1 x 1.5 x 1.5 , 2.3 x 1.7 x 1.7

Volume Capacity m3 4.73

- 100mm thick Thermo panels
- External skins 0.6mm pre-painted hot dip galvanized steel
- Internal skins 0.75mm PVC plastisol coated galvanized steel
- PUF panels having density of 40 Kg/cm³
- Cam lock fixing system
- Colour white
- Internal Surface with ribs
- External Surface without ribs
- Overall thickness 100mm
- 18mm thick reinforced ply skins on top and bottom
- Polyurethane foam core reinforced with wooden spacers
- Final finish with Aluminium Checkered Plate floor
- 300mm high aluminium kick plates
- Double leaf rear wing door
- Single side door
- Complete heavy duty rubber gaskets
- Container type door locking system
- Stainless Steel hinges
- Stainless Steel hardware and fittings
- Plastic Strip curtains will be fitted on both doors
- Minimize the hot air infiltration during door openings
- Fixing with Stainless Steel 'clip on system'
- Each individual strip can be removed for cleaning
- Recommended for food industry
- Sufficient LED Lights Inside the compartment
- Rear bumper with flat step

Contact Us ::
distribution@jssl-global.net
TEL :: +974-44850653
Fax :: +974-44131529